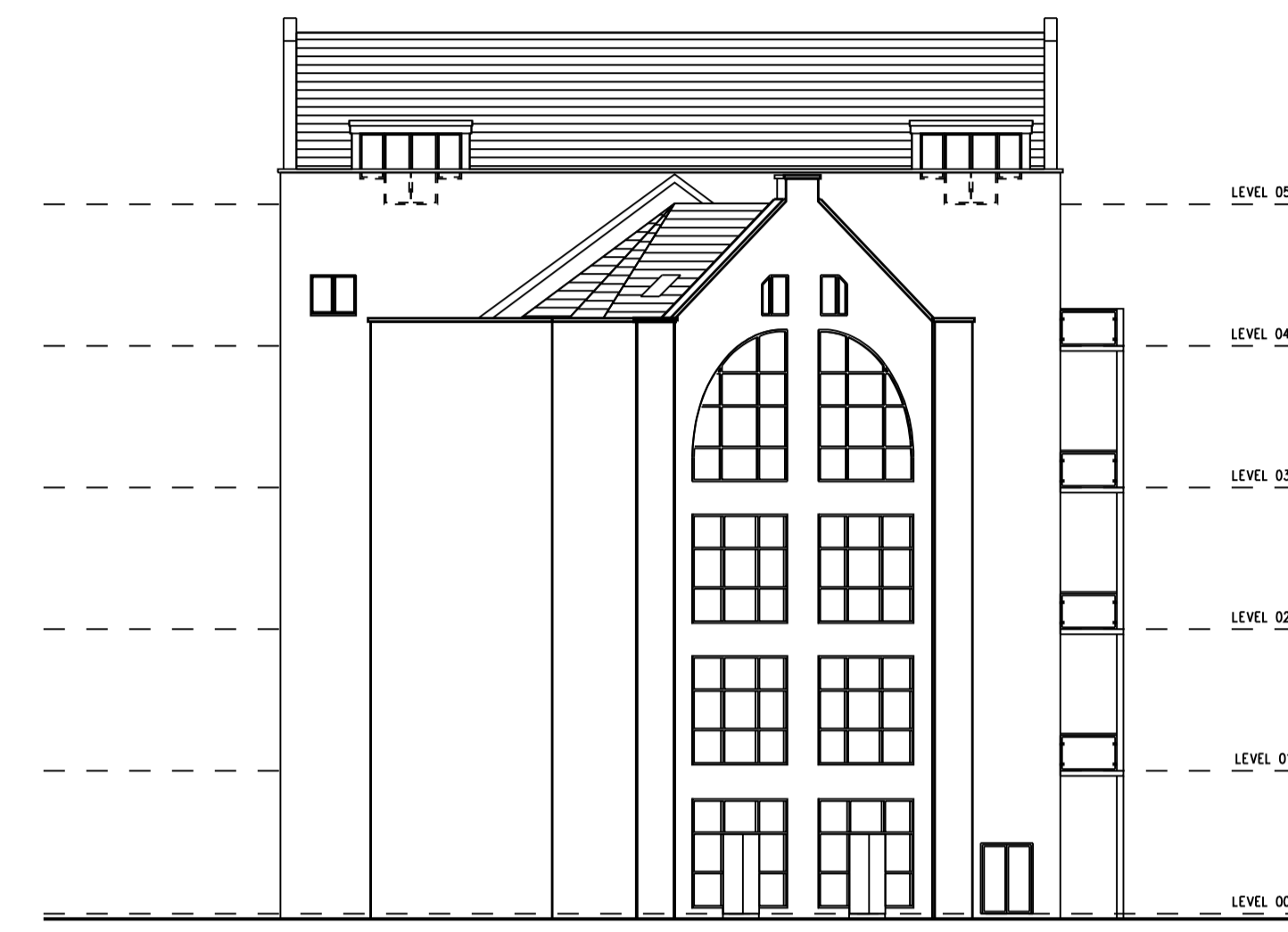


# UTILITYWISE BLOCK

REVISION DATE / DESCRIPTION  
 REVISION 'A' - 27.01.17  
 - APERTURES UPDATED TO MATCH FLOOR PLANS  
 REVISION 'B' - 02.02.17  
 - ROOFLIGHTS REVISED  
 REVISION 'C' - 24.04.17  
 - UPDATED TO MATCH PLAN CHANGES  
 REVISION 'D' - 12.05.17  
 - UPDATED TO MATCH PLAN CHANGES  
 REVISION 'E' - 24.05.17  
 - TOP FLOOR (DUPEX) DORMERS REVISED



PROPOSED FRONT (LONG ROW) ELEVATION



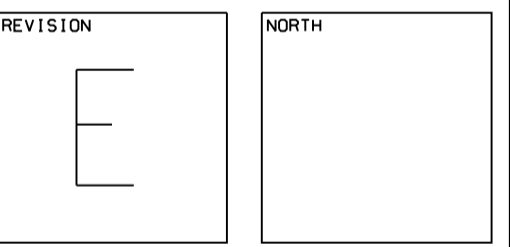
PROPOSED SIDE ELEVATION



PROPOSED REAR (RIVERSIDE) ELEVATION



PROPOSED SIDE ELEVATION



STAGE: PLANNING

PROJECT  
 PROPOSED EXTERNAL MODIFICATIONS  
 FOR RESIDENTIAL PRIOR APPROVAL  
 AT MARKET DOCK, LONG ROW,  
 SOUTH SHIELDS, NE33 1JA

DRAWING  
 PROPOSED ELEVATIONS  
 (UTILITYWISE BLOCK)

PROJECT NO. 2924	DRAWING NO. C-12	REVISION E
DATE JAN '17	SCALES 1:2000A1 1:4000A3	DRAWN BY ACW

MARIO MINCHELLA ARCHITECTS

UNIT 4, WITNEY WAY,  
 HI-TECH VILLAGES,  
 BOLDON BUSINESS PARK  
 TYNE AND WEAR  
 NE25 9PE  
 T: 0191 3002227  
 W: WWW.M-M-A.NET  
 E: INFO@M-M-A.NET

THIS DRAWING IS  
 COPYRIGHT OF  
 MMJM LIMITED

NOT TO BE SCALED  
 ALL DIMENSIONS TO  
 BE CHECKED ON SITE